

CRITERION A: RESEARCH PAPER



Music Context #6: Concepts associated with presenting music such as practice, rehearsal, performance, direction, composing and arranging.

Area of Interaction: Health & Social Education with Approaches to Learning

Unit Question: “Why are proper playing positions integral to my health and well-being?”

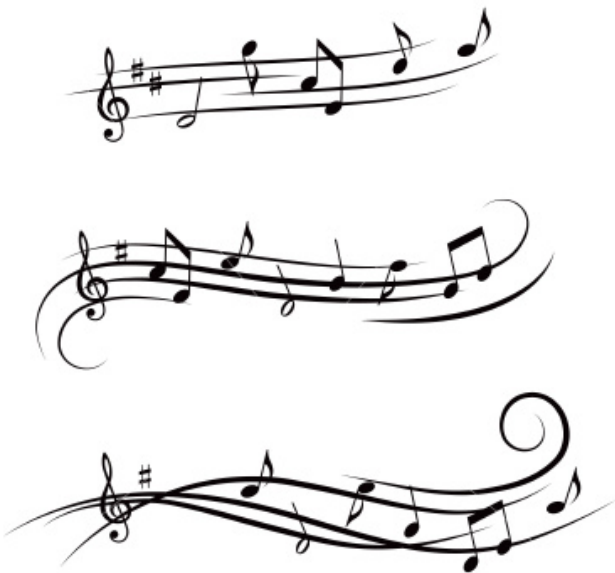
Criterion A: Research Paper

Summative Assessment

Strand(s):

- demonstrate knowledge and understanding of the art form studied in relation to societal, cultural, historical and personal contexts

This outline roughly follows the Personal Process Project (PPP) outline. Please fill in your research below each heading:



Introduction:

- General history of your instrument
- Why you chose your instrument
- Area of Interaction - Health & Social Education
(tell me what Health & Social Education is)
- State your Unit Question “Why are proper playing positions integral to my health and well-being?”

Body:

- embouchure
- posture
- breathing techniques
- hand positions
- items needed to be purchased
- how to practice well
- picture of someone playing VERY badly
- picture of someone playing VERY well
- What happens if someone plays your instrument badly.
What happens to their body?

Reflection:

- **ANSWER YOUR UNIT QUESTION:** Why do you need proper playing positions?

Bibliography

APA 6th Edition. Please do not cite the Naver website.

Your overall results will adhere to the official Criterion A rubric. This particular essay will be assessed using the task specific rubric provided.